

Tie-rod Cylinder | ISO 15552



Tie-rod Cylinder | ISO 15552

page 90

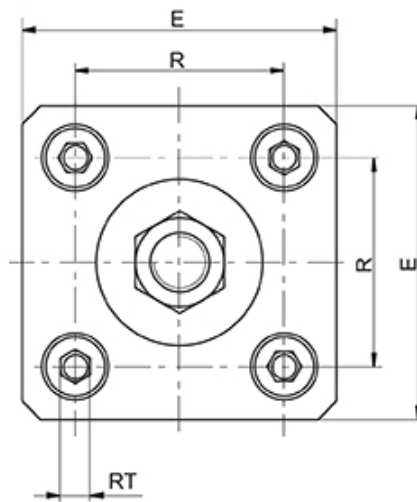
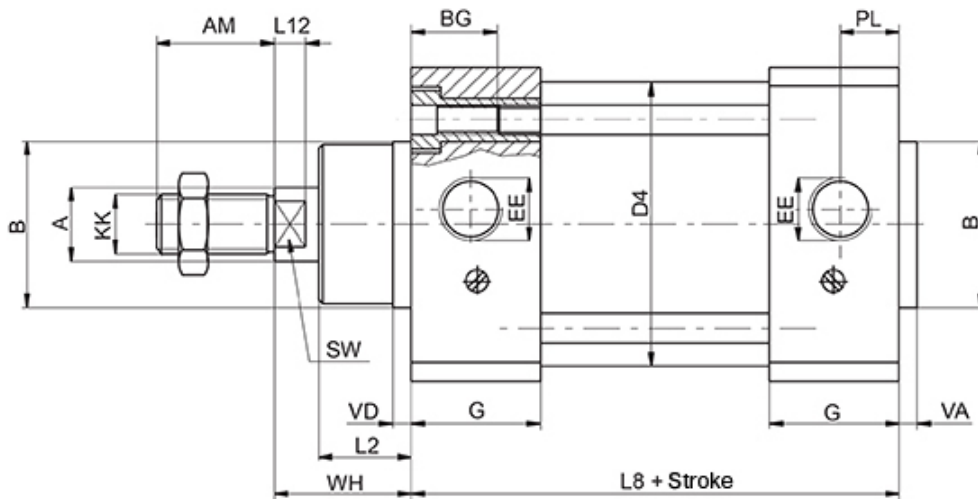
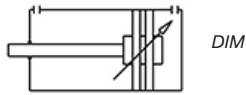
Technical information	
Diameter	Ø160 - Ø200 - Ø250 - Ø320 mm
Stroke	25 - 50 - 80 - 100 - 125 - 160 - 200 - 250 - 320 - 400 - 500 - 600 - 700-800 -900 - 1000 mm
Medium	Air
Pressure range	1 ... 10 bar
Temperature range	-20°C ... +80°C
Below 0°C air has to be dried.	

Materials	
Tube	Anodized aluminum
Fedél	Die-cast aluminum
Piston	Aluminum
Piston rod	Stainless steel
Guide bushing	Sintered bronze
Seals	PUR, NBR

D	I	M	160 /	200
			DIAMETER	STROKE
			160	25
			200	50
			250	80
			320	100
				125
				160
				200
				250
				320
				400
				500
				600
				700
				800
				900
				1000
FUNCTION				
I	Double acting			



DIM



Ø [mm]	A	AM	B	BG	D4	E	EE	G	KK	L2	L8	L12	PL	R	RT	SW	VA	VD	WH
Ø160	40	72	65	24	170	182	G3/4	59	M36x2	38	180	12	27	140	M16	38	6	6	80
Ø200	40	72	75	24	210	222	G3/4	61	M36x2	55	180	12	35	175	M16	38	6	6	95
Ø250	50	84	90	25	264	274	G1	61	M42x2	65	200	20	31	220	M20	46	10	10	105
Ø320	60	96	110	28	336	352	G1	63	M42x2	75	220	20	34	270	M24	55	10	10	120



Tie-rod Cylinder | ISO 15552

page 92

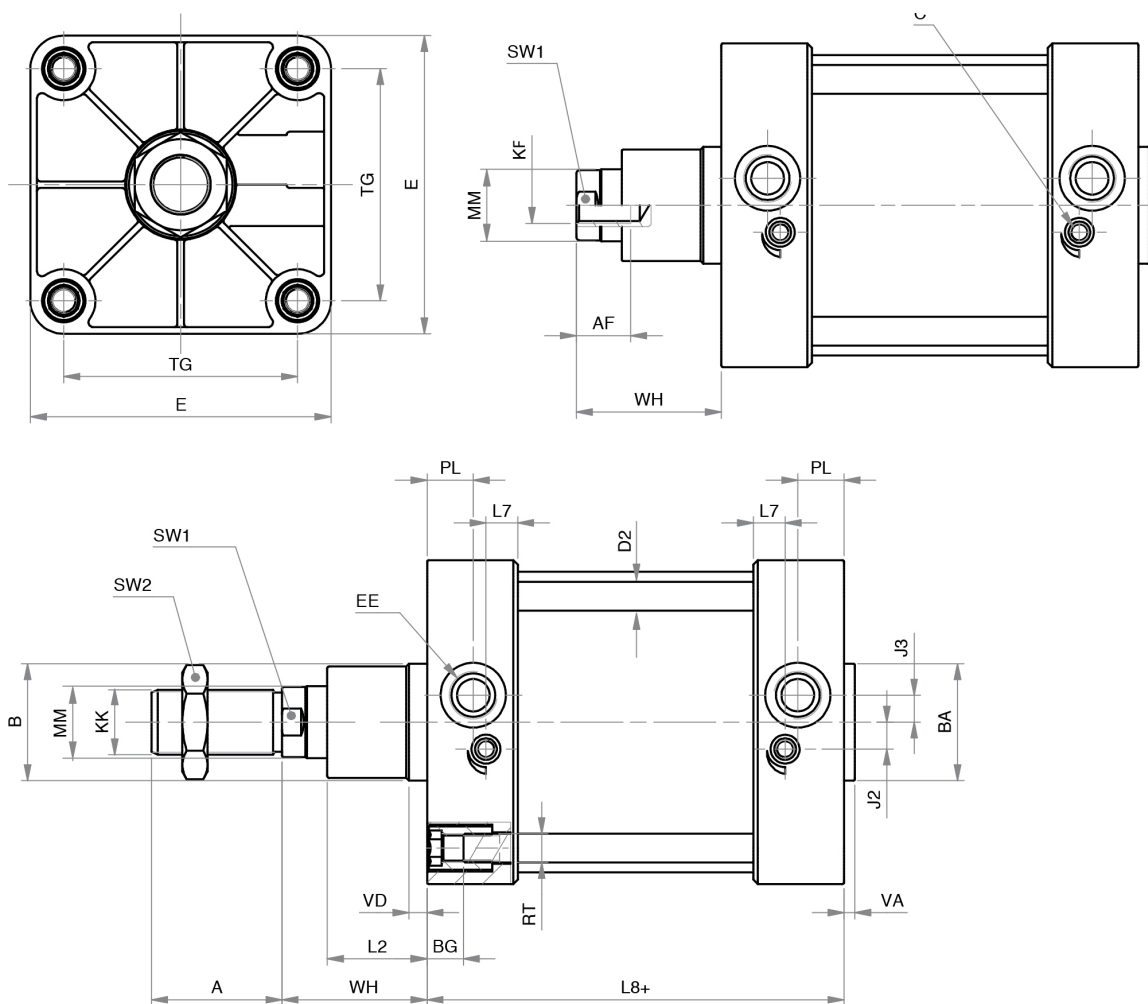
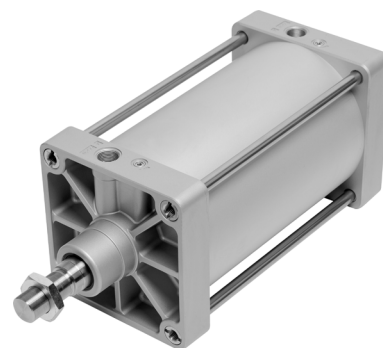
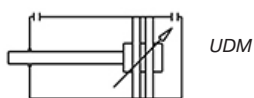
Technical information	
Diameter	160 - Ø200 - Ø250 - Ø320 mm
Stroke	25 - 50 - 80 - 100 - 125 - 150 - 160 - 200 - 250 - 320 - 400 - 500 - 600 - 700 - 800 - 900 - 1000 mm
Medium	Air
Pressure range	1 ... 10 bar
Temperature range	-20°C ... +80°C FPM version 0°C ... +150°C
	Below 0°C air has to be dried.

Materials	
Tube	Anodized aluminum
Fedél	Die-cast aluminum
Piston	Aluminum
Piston rod	Stainless steel
Guide bushing	Sintered bronze
Seals	PUR, NBR/FPM (depending on type)

U	D	M	N	V	160 / 200	200	Ex
					DIAMETER	STROKE	OPTIONS
					160	25	Ex ATEX version
					200	50	
						80	
						100	
						125	
						160	
						200	
						250	
						320	
						400	
						500	
						600	
						700	
						800	
						900	
						1000	
					VERSION		
					WITHOUT	Standard seals	
					R	Stainless steel piston rod	
					K	FPM Piston	
					V	FPM seals	
					P	Through piston rod	
					THREAD		
					WITHOUT	Piston rod with male thread	
					N	Piston rod with female thread	



UDM

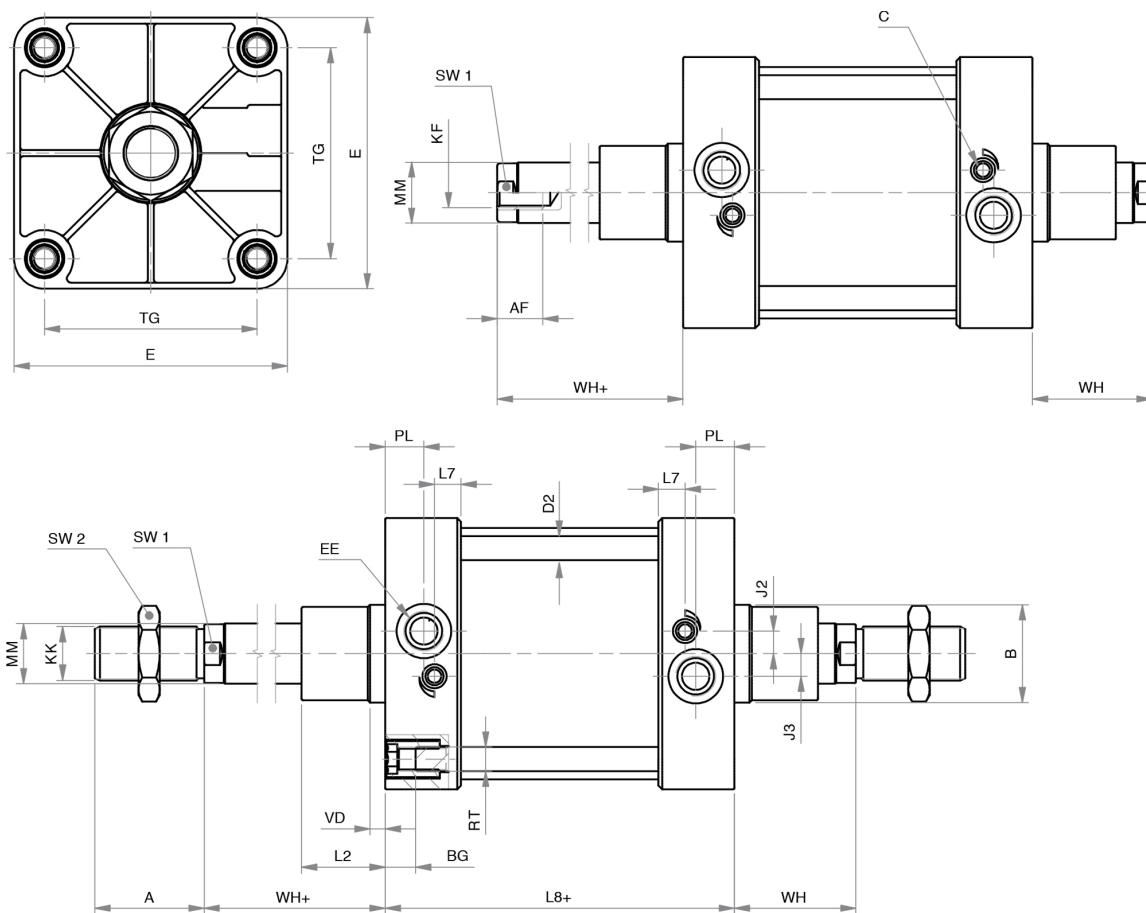
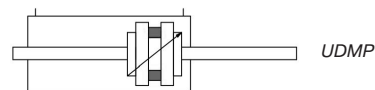
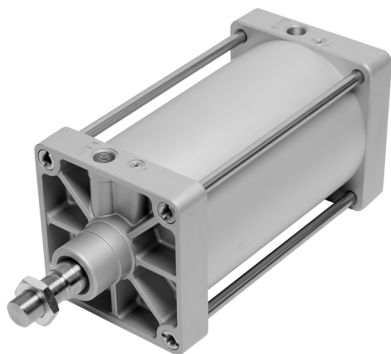


Ø [mm]	A	AF	B	BA	BG	D2	E	EE	J2	J3	KF	KK	L2	L7	L8+	MM	PL	RT	SW1	SW2	TG	VA	VD	WH
Ø160	72	30	65	65	24	16	180	G3/4	15	15	M20	M36x2	55	17,5	180	40	25,5	M16	36	55	140	6	10	80
Ø200	72	30	75	75	24	16	220	G3/4	15	15	M20	M36x2	65	16	180	40	25,5	M16	36	55	175	8	25	95
Ø250	84	40	90	90	25	20	270	G1	25	25	M24	M42x2	75	20	200	50	30	M20	46	65	220	8	25	105
Ø320	96	50	110	110	28	25	350	G1	35	35	M30	M48x2	90	20	220	63	30	M24	55	75	270	10	25	120



UDMP

page 94



Ø [mm]	A	AF	B	BG	D2	E	EE	J2	J3	KF	KK	L2	L7	L8+	MM	PL	RT	SW1	SW2	TG	VD	WH	WH+
Ø160	72	30	65	24	16	180	G3/4	15	15	M20	M36x2	55	17,5	180	40	25,5	M16	36	55	140	10	80	80
Ø200	72	30	75	24	16	220	G3/4	15	15	M20	M36x2	65	16	180	40	25,5	M16	36	55	175	25	95	95
Ø250	84	40	90	25	20	270	G1	25	25	M24	M42x2	75	20	200	50	30	M20	46	65	220	25	105	105
Ø320	96	50	110	28	25	350	G1	35	35	M30	M48x2	90	20	220	63	30	M24	55	75	270	25	120	120

